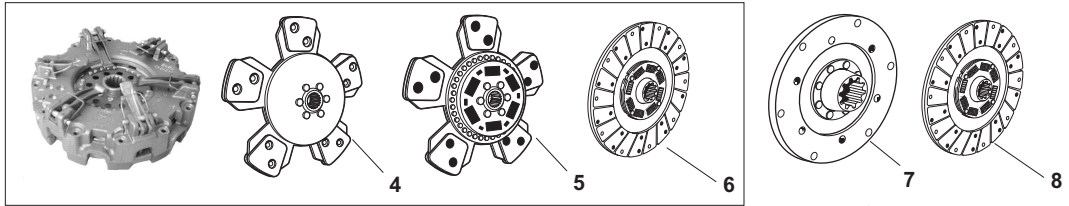


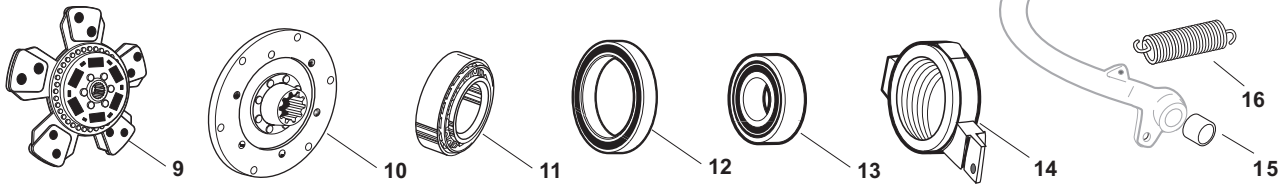
Sparex Replacement Parts - Long

Clutch and Related Components



*The only difference between these Rep Sets is the captive main plate. Choosing your clutch will depend upon which plate you prefer.

Luk 12 bolt Rep Set is used to repair not only 12 Bolt Luk clutches but 9 Bolt Valeo style clutches as well.



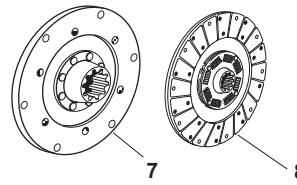
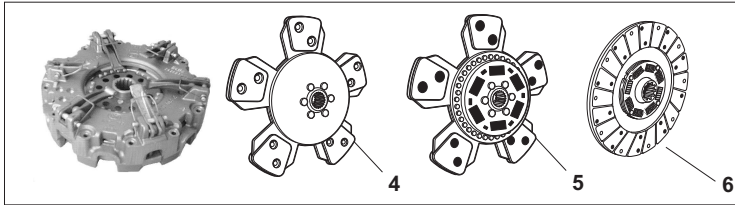
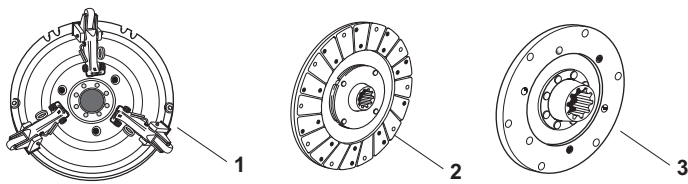
SPAREX No.	DESCRIPTION	EQUIVALENT	TRACTOR MODEL
1	S.58924 Clutch Assembly (10") w/ PTO & Tractor Drive Discs - Flat Bottom Plate	TX12806	260C, 310, 310DT, 310C, 350, 360, 360C, 445, 445DT, 445SD, 445V, 460, 460DT, 460SD, 460V
1	S.66750 Clutch Assembly (10") w/ PTO & Tractor Drive Discs - Stepped Bottom Plate	TX12806	260C, 310, 310DT, 310C, 350, 360, 360C, 445, 445DT, 445SD, 445V, 460, 460DT, 460SD, 460V
2	S.58925 Disc - Transmission Drive (10", 1 9/16"-19 Spline)	TX13010	260C, 310, 310DT, 310C, 350, 360, 360C, 445, 445DT, 445SD, 445V, 460, 460DT, 460SD, 460V
3	S.69913 Disc - PTO Drive (10", 1"-10 Spline)	TX13011	260C, 310, 310DT, 310C, 350, 360, 360C, 445, 445DT, 445SD, 445V, 460, 460DT, 460SD, 460V
4*	S.61201 Clutch Rep Set (11") Includes Clutch Assembly w/ 5 Pad Rigid Disc - Organic PTO Disc - Replaces 9 Bolt Valeo Clutches	TX17247 TX14987	320, 460, 460DT, 460SD, 460V, 510, 510DT, 560, 560DT, 560DTE, 610, 610DT, 610DTE, 610C, 2510, 2510DTC, 2510SD, 2510SD-DTC, 2610, 2610DTC, 2610SD, 2610SD-DTC, 2460, 2460DTC, 2460SD, 2460SD-DTC
5*	S.61266 Clutch Rep Set (11") Includes Clutch Assembly w/ 5 Pad Sprung Disc - Organic PTO Disc - Replaces 9 Bolt Valeo Clutches	TX17247 TX14987	320, 460, 460DT, 460SD, 460V, 510, 510DT, 560, 560DT, 560DTE, 610, 610DT, 610DTE, 610C, 2510, 2510DTC, 2510SD, 2510SD-DTC, 2610, 2610DTC, 2610SD, 2610SD-DTC, 2460, 2460DTC, 2460SD, 2460SD-DTC
6*	S.61267 Clutch Rep Set (11") Includes Clutch Assembly w/ Organic Sprung Disc - Organic PTO Disc - Replaces 9 Bolt Valeo Clutches	TX17247 TX14987	320, 460, 460DT, 460SD, 460V, 510, 510DT, 560, 560DT, 560DTE, 610, 610DT, 610DTE, 610C, 2510, 2510DTC, 2510SD, 2510SD-DTC, 2610, 2610DTC, 2610SD, 2610SD-DTC, 2460, 2460DTC, 2460SD, 2460SD-DTC
7	S.62185 Clutch Disc - Main (11") Organic / Rigid (11" x 1 9/16" - 14)	TX16809	460, 460DT, 460SD, 460V, 510, 510DT, 560, 560DT, 560DTE, 610, 610DT, 610DTE, 610C
8	S.69915 Clutch Disc - Main (11") Organic Dampener Springs (11" x 1 9/16" - 14)	TX16809	460, 460DT, 460SD, 460V, 510, 510DT, 560, 560DT, 560DTE, 610, 610DT, 610DTE, 610C
9	S.61252 Clutch Disc - Main (11") w/ 5 Pad Dampener Springs (11" x 1 9/16" - 14)	TX17077	320, 2510, 2510DTC, 2510SD, 2510SD-DTC, 2610, 2610DTC, 2610SD, 2610SD-DTC, 2360, 2360DTC, 2460, 2460DTC, 2460SD, 2460SD-DTC

Please see Index for alternative O.E. part numbers.

These parts are Sparex parts and are not manufactured by the Original Equipment Manufacturer. Original Equipment Manufacturer names, part numbers and descriptions are quoted for reference purposes only.

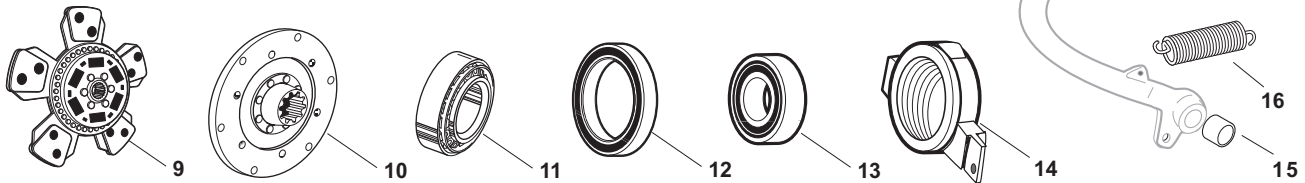
Sparex Replacement Parts - Long

Clutch and Related Components



*The only difference between these Rep Sets is the captive main plate. Choosing your clutch will depend upon which plate you prefer.

Luk 12 bolt Rep Set is used to repair not only 12 Bolt Luk clutches but 9 Bolt Valeo style clutches as well.



SPAREX No.	DESCRIPTION	EQUIVALENT	TRACTOR MODEL
10	S.61927 Clutch Disc - PTO (11" x 1" - 10)	TX14989	320, 460, 460DT, 460SD, 460V, 510, 510DT, 560, 560DT, 560DTE, 610, 610DT, 610DTE, 610C, 2510, 2510DTC, 2510SD, 2510SD-DTC, 2610, 2610DTC, 2610SD, 2610SD-DTC, 2360, 2360DTC, 2460, 2460DTC, 2460SD, 2460SD-DTC
10	S.61235 Clutch Disc - PTO (11" x 1" - x 10)		Use w/ Luk Clutch - 7/6mm Thick Lining
11	S.62170 Release Bearing (11" Clutch) 8 Speed/8 Speed Shuttle Drive (Where Listed)	9-90423	320, 360, 360C, 460, 460DT, 460V, 510, 510DT, 2510, 2510DTC, 2510SD, 2510SD-DTC, 2610, 2610DTC, 2610SD, 2610SD-DTC, 2360, 2360DTC, 2460, 2460DTC
12	S.18170 Bearing - PTO Release 8 Speed/8 Speed Shuttle Drive (65 x 100 x 11mm)	TX51596 TX51627	320, 360, 360C, 460, 460DT, 460SD, 460V, 510, 510DT, 560, 560DT, 560DTC, 610DT, 610DTE, 610C, 2510, 2510DTC, 2510SD, 2510SD-DTC, 2610, 2610DTC, 2610SD, 2610SD-DTC, 2360, 2360DTC, 2460, 2460DTC, 2460SD, 2460SD-DTC
13	S.18133 Pilot Bearing (17 x 47 x 14mm)	TX11575	260C, 310, 310DT, 310C, 320, 350, 360, 360C, 445, 445DT, 445SD, 445V, 460, 460DT, 460SD, 460V, 510, 510DT, 550, 550DT, 560, 560DT, 560DTE, 610, 610DT, 610DTE, 610C, 2310, 2510, 2510DTC, 2510SD, 2510SD-DTC, 2610, 2610DTC, 2610SD, 2610SD-DTC, 2260, 2360, 2360DTC, 2460, 2460DTC, 2460SD, 2460SD-DTC
14	S.61946 Hub - PTO Clutch Bearing - 8 Speed (Except where noted)	TX14854	320, 360, 360C, 460, 460DT, 460SD, 460V, 510, 510DT, 560, 560DT, (560DTE 12 Speed), 610, 610DT, (610DTE 12 Speed), 610C, 2510, 2510DTC, 2510SD, 2510SD-DTC, 2610, 2610DTC, 2610SD, 2610SD-DTC, 2360, 2360DTC, 2460, 2460DTC, 2460SD, 2460SD-DTC
15	S.62402 Bushing - Clutch Pedal	TX10920	320, 360, 360C, 460, 460DT, 460SD, 460V, 510, 510DT, 560, 560DT, (560DTE 12 Speed), 610, 610DT, (610DTE 12 Speed), 610C, 2510, 2510DTC, 2510SD, 2510SD-DTC, 2610, 2610DTC, 2610SD, 2610SD-DTC, 2360, 2360DTC, 2460, 2460DTC, 2460SD, 2460SD-DTC
16	S.61983 Spring - Clutch Pedal Return	TX10925	320, (460, 460V, 510 8 Speed), 550, 550DT, 560, 610, 610C, 2510, 2510DTC, 2510SD, 2510SD-DTC, 2610, 2610DTC, 2610SD, 2610SD-DTC, 2360, 2360DTC, 2460, 2460DTC, 2460SD, 2460SD-DTC

Please see Index for alternative O.E. part numbers.

These parts are Sparex parts and are not manufactured by the Original Equipment Manufacturer.

Original Equipment Manufacturer names, part numbers and descriptions are quoted for reference purposes only.